

## Allen-Bradley Kinetix VPC Continuous Duty Servo Motor

High Performance for Continuous Duty Applications

The Kinetix® VPC Servo Motor uses interior permanent magnet technology to provide more efficiency at higher speeds in continuous duty applications. Design features, such as the attached fan kit and option for single cable power and feedback, both enhance machine performance and increase ease of use.

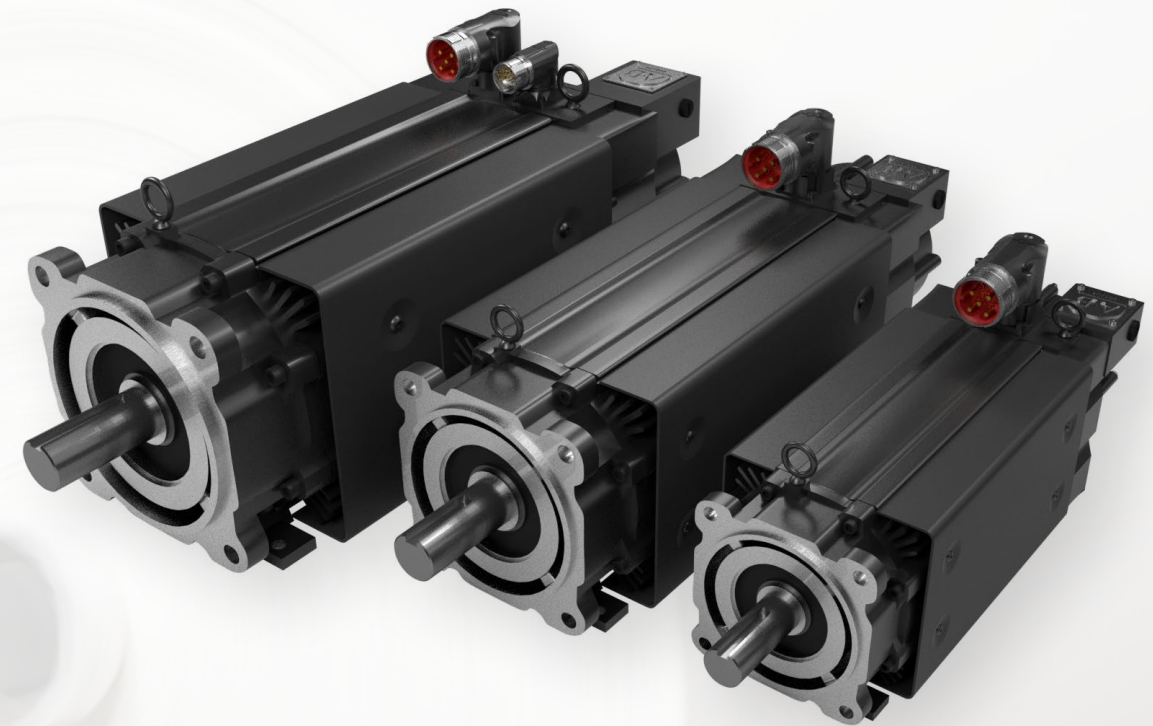
Our common Logix platform allows you to program the Kinetix VPC along with the Kinetix 5700 Servo Drive and the rest of your control system in the Studio 5000® design environment.

### Increase Performance

- Increased torque rating with cooling fins and fan kit
- High resolution encoders provide faster, better control
- Interior permanent magnet technology provides more efficiency at higher speeds


### Reduce Costs

- Up to 60% improvement in L10 bearing life
- Single cable connectivity reduces cost of spares and downtime
- Fan kit is field replaceable
- Achieves IE4 efficiency for lower energy costs



LISTEN.  
THINK.  
SOLVE.

REVERE  
ELECTRIC  
SUPPLY CO.  
Messenger  
of Service

 Allen-Bradley • Rockwell Software

**Rockwell**  
Automation



# Kinetix VPC

## Product Specifications

Motor Cat. No.	Rated Speed (rpm)	Max Speed* (rpm)	Rated Cont. Torque (Nm)	Peak Torque (Nm)	Rated Cont. Power (kw)	IE4 Energy Rating (%)	Kinetix 5700 Drive Matching
VPC-B1652A	1500	4500	25.5	40	4.0	91.1	2198-D020-ERS
VPC-B1653A			35.1	60	5.5	92.6	2198-D032-ERS
VPC-B1652D	3000	5000	17.6	40	5.5	93.0	2198-D032-ERS
VPC-B1653D			24.0	60	7.5	93.8	2198-D057-ERS
VPC-B1654D			35.1	75	11.0	93.5	2198-D057-ERS
VPC-B21539	1000	3000	52.5	114	5.5	92.7	2198-D032-ERS
VPC-B21549			72.0	152	7.5	92.9	2198-D057-ERS
VPC-B2153A	1500	4500	48.0	110	7.5	93.9	2198-D057-ERS
VPC-B2154A			70.1	140	11.0	94.5	2198-D057-ERS
VPC-B2154D	3000	5000	48.0	125	15.0	94.5	2198-S086-ERS
VPC-B2155D			59.0	155	18.5	94.0	2198-S086-ERS
VPC-B2156D			70.1	185	22.0	94.0	2198-S086-ERS
VPC-B30029	1000	3000	105.1	170	11.0	94.9	2198-S086-ERS
VPC-B30039			143.3	230	15.0	96.3	2198-S086-ERS
VPC-B30049			176.7	310	18.5	96.5	2198-S086-ERS
VPC-B3002A	1500	4000	95.5	170	15.0	95.2	2198-S086-ERS
VPC-B3003A		3500	140.3	230	22.0	96.3	2198-S086-ERS
VPC-B3004A			191.1	310	30.0	96.0	2198-S130-ERS
VPC-B3004D		3000	4000	95.5	250	30.0	94.7

\* Active shunt or other bus protection device may be required for achieving full max speed.

Allen-Bradley, Kinetix, LISTEN. THINK. SOLVE., Rockwell Software and Studio 5000 are trademarks of Rockwell Automation, Inc. Trademarks not belonging to Rockwell Automation are property of their respective companies.

[www.rockwellautomation.com](http://www.rockwellautomation.com)

### Power, Control and Information Solutions Headquarters

Americas: Rockwell Automation, 1201 South Second Street, Milwaukee, WI 53204-2496 USA, Tel: (1) 414.382.2000, Fax: (1) 414.382.4444  
 Europe/Middle East/Africa: Rockwell Automation NV, Pegasus Park, De Kleetlaan 12a, 1831 Diegem, Belgium, Tel: (32) 2 663 0600, Fax: (32) 2 663 0640  
 Asia Pacific: Rockwell Automation, Level 14, Core F, Cyberport 3, 100 Cyberport Road, Hong Kong, Tel: (852) 2887 4788, Fax: (852) 2508 1846

Publication VPC-SP001A-EN-P – September 2016



TARGET MARKET for  
 an *Industry Focus*

Converting  
 Printing  
 Web Handling



Contact Revere Electric for More Information  
[www.revereelectric.com](http://www.revereelectric.com)  
[reveremarketing@revereelectric.com](mailto:reveremarketing@revereelectric.com)

Copyright © 2016 Rockwell Automation, Inc. All Rights Reserved. Printed in USA.