

components UPDATE

WHAT'S NEW?

NEW PRODUCTS FROM THE ROCKWELL AUTOMATION COMPONENTS BUSINESSES

Bulletin 193-EC4 Electronic Overload Relays - Product Line Extension



AFS: Now!

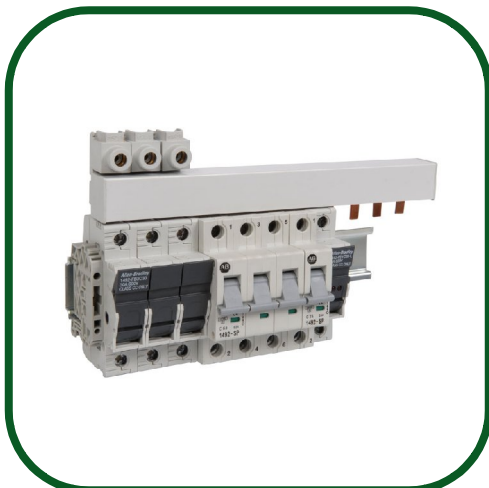
The Allen-Bradley® Bulletin 193-EC5 from Rockwell Automation provides you with voltage protection and energy monitoring for electric motors. The addition of voltage protection helps you protect your motors against voltage issues such as under voltage, voltage unbalance, phase loss, frequency, and phase rotation before the contact coil is energized. Also, while your motor is powering a load, the EC5 is monitoring and protecting for excessive real, reactive and apparent powers, and power factor.

Advantages:

- Current protection
- Voltage protection
- Power protection
- Includes integrated I/O
- DeviceNet™ communications included as standard
- DeviceLogix™ enabled

Product Profile: [193-PP026A-EN-P](#)

Bulletin 1492-A Bus Bars - Product Line Extension



AFS: Now!

These products are designed to work with both Bulletin 1492-FB fuse holders (Type CC and M) and Bulletin 1492-SP supplementary protectors/miniature circuit breakers.

Advantages:

- Work with both fuse holders or supplementary protectors/MCBs
- Add to the value of the fuse holders or supplementary protectors/MCBs
- cULus listing

Product Profile: [1492SP-PP001F-EN-P](#) & [1492FB-PP001E-EN-P](#)

Bulletin 840E Solid-State Level Switches - Product Line Extension

AFS: Now!

The Allen-Bradley Condition Sensing family from Rockwell Automation introduces the new 840E solid-state level switch to its already successful product line.



The compact 840E level switch is based on piezoelectric vibrating fork technology. The level switch monitors resonance frequency and indicates whether the tuning fork is freely vibrating or covered by liquid. With its IP66/67 rating, the 840E performs reliably in the harshest of environments, including turbulence, vibration, content build-up, changing media, and bubbles and foam.

Advantages:

- Liquid level switch used in tanks, containers and pipelines
- On-site control using external LED display
- Easy-to-install
- Microprocessor based with no moving parts for longer life and reduced downtime
- Rugged, corrosion-resistant 316L stainless steel housing features IP66/67 rating for DC type and IP65 for AC type enclosure for various industrial conditions
- DC PNP version with M12 connector
- AC version with DIN valve connector
- 316L stainless steel sensing element

Product Profile: [840E-PP001A-EN-P](#)

45FPL DIN Mount Fiber Optic Sensors - Product Line Extension

AFC: NOW!

The new 45FPL DIN Mount Fiber Optic Sensor provides a solution perfect for applications with significant space limitations. These amplifiers can be mounted side-by-side along a DIN-rail away from the actual application providing installation flexibility and a superior noise immunity. This sensor provides twice the sensing range of the existing 45FVL but at a lower price point and with a large easy-to-read LED display. This new offering complements the existing 45FVL, 45FSL, 42FT and 42FB DIN mount fiber optic sensors.



Advantages:

- Twice the sensing range of the existing product portfolio
- Two step static or dynamic teach functionality with optional manual adjustment allows the user to determine and set the optimum sensitivity setting for applications
- Large, easy-to-read backlit display clearly indicates detected light levels, operating modes, functions and diagnostic information
- High speed and long range modes allow for maximum application flexibility

Product Profile: [DINFBR-PP001A-EN-P](#)

AMCI 3100 Series Two-Axis Motion Control Module - Encompass Partner Product



Advantages:

- Compatible with MicroLogix 1762 I/O (1100, 1200, 1400)
- Easy to program - no extra software
- Controls servo and/or stepper drives
- Linear and circular interpolation commands
- Encoder feedback, providing closed loop

ADDITIONAL UPDATES FROM THE ROCKWELL AUTOMATION COMPONENTS BUSINESSES

Sales Tools

Signaling Solutions Brochure

This new brochure was released January 2010

- [855-BR001C-EN-P](#) (electronic only)

Other News

PanelView Component Firmware [Version 1.30](#) Now Available

Firmware enhancements include:

- New Configuration Application Interface
- Improved Configuration Application loading time
- Running an application in DesignTime
- Improved Terminal Boot-to-ready time
- Improved Application Loading/Edit time
- Improved Application Saving time
- Faster Copy/Paste operation in DesignTime
- Modbus Half-duplex protocol, communicate to PF4 Drive directly

Product Obsolescence Notices

- [Bulletin 156-A Solid-State Contactors](#)
- [Bulletin 855B-GMS 12VAC/DC Mini Square Beacons](#)
- [Bulletin 871TM 12 mm Nonferrous & 30 mm Ferrous 3-wire DC Inductive Sensors](#)
- [Bulletin 871ZC 3-Wire DC Inductive Sensors](#)